

EDUTOUCH MAGIC CARPET



EDUTOUCH MAGIC CARPET

The EduTouch Magic Carpet, developed by Queensland University of Technology (QUT) researchers allows intuitive direct physical interactions with a digital environment without the need to master a mouse, keyboard or controller. This makes it an ideal system for young children, patients undergoing physical rehabilitation, people with disabilities and the elderly to name just a few. The technology allows the user to experience whole body immersive interaction and has many potentially educational, social and physical benefits.

Includes:

Mobile Stand

Projector (3,100 Lumen)

Built-in Core i5 PC

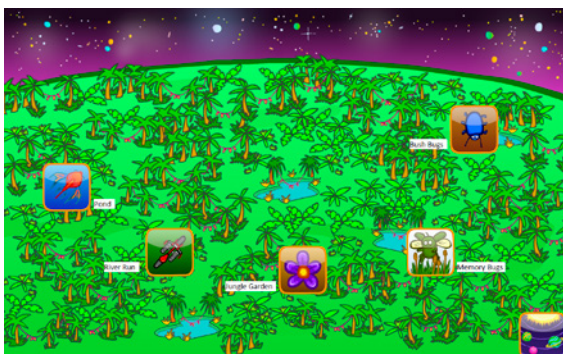
3 x 2 meter White Durable Sheet

20 Pre-Loaded Interactive Educational Games

12 Month Warranty

Applications:

- Early childhood care and education
- Secondary education
- Corporate training and team building
- Pediatric therapy, assisting in the rehabilitation process
- Health and fitness, encouraging physical activity
- Advertising, immersing customers in an interactive environment
- Disability services, providing previously inaccessible exploratory experiences



A VERSATILE SOLUTION THAT MAKES LEARNING FUN AND INTERACTIVE



The Education Solutions Specialists

1800 334 633 info@ig3education.com.au www.ig3education.com.au